



# Connecticut Children's

# Care Network

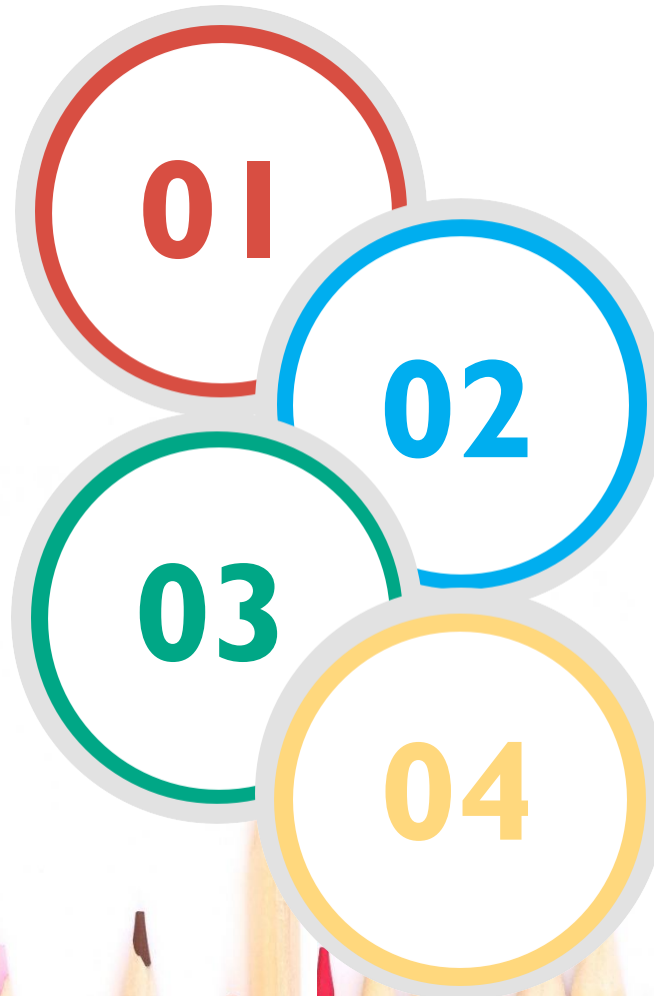
## Quarterly QI Visits

### Value-Based Contracts, Metrics & Data

- QI Methodology Overview
- Review the measures
- Review latest claims based data

### Measurement & Analysis

- Review Gaps in Care towards targets
- Analyze EHR and Arcadia Data
- Project performance, barrier removal



### Planning your QI Project

- P is for Planning
- Use baseline data to select an improvement project
- Root Cause, sharing best practices

### Year End Review

- Project Completion
- Lessons Learned
- Review latest claims based data
- Supplemental Data Review

