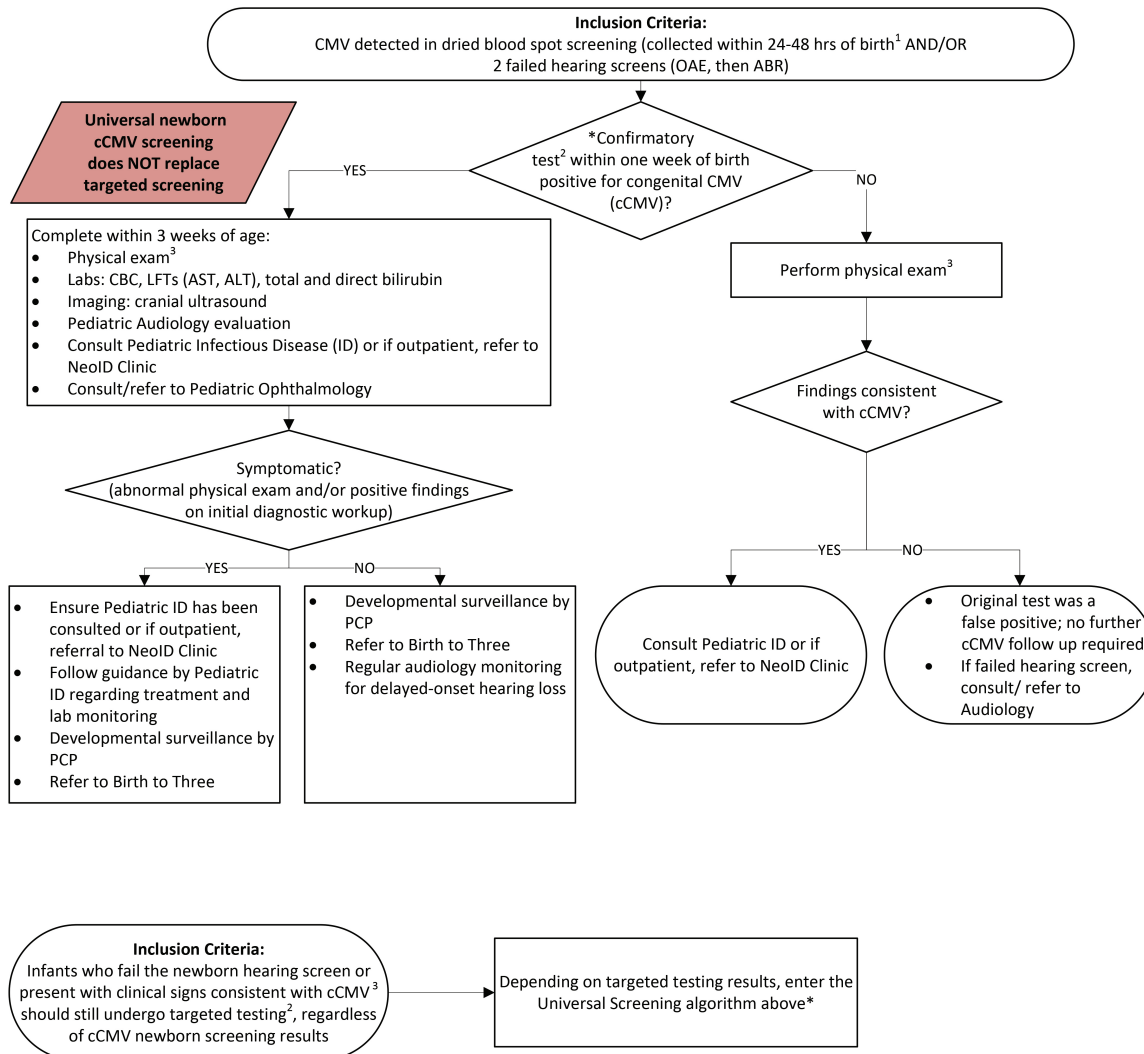


UNIVERSAL SCREENING

TARGETED SCREENING



¹If CMV is detected via dried blood spot, the Connecticut Newborn Screening Network will reach out to PCP/NICU regarding next steps

²Urine confirmatory testing is strongly preferred. If cannot collect urine, saliva is an alternative, but saliva has a higher false positive rate and must ultimately be confirmed with urine testing

³**Physical Exam Findings Consistent with cCMV:**

- Jaundice
- Petechiae or purpura
- Hepatomegaly
- Splenomegaly
- Microcephaly
- Abnormal reflexes
- Hypotonia